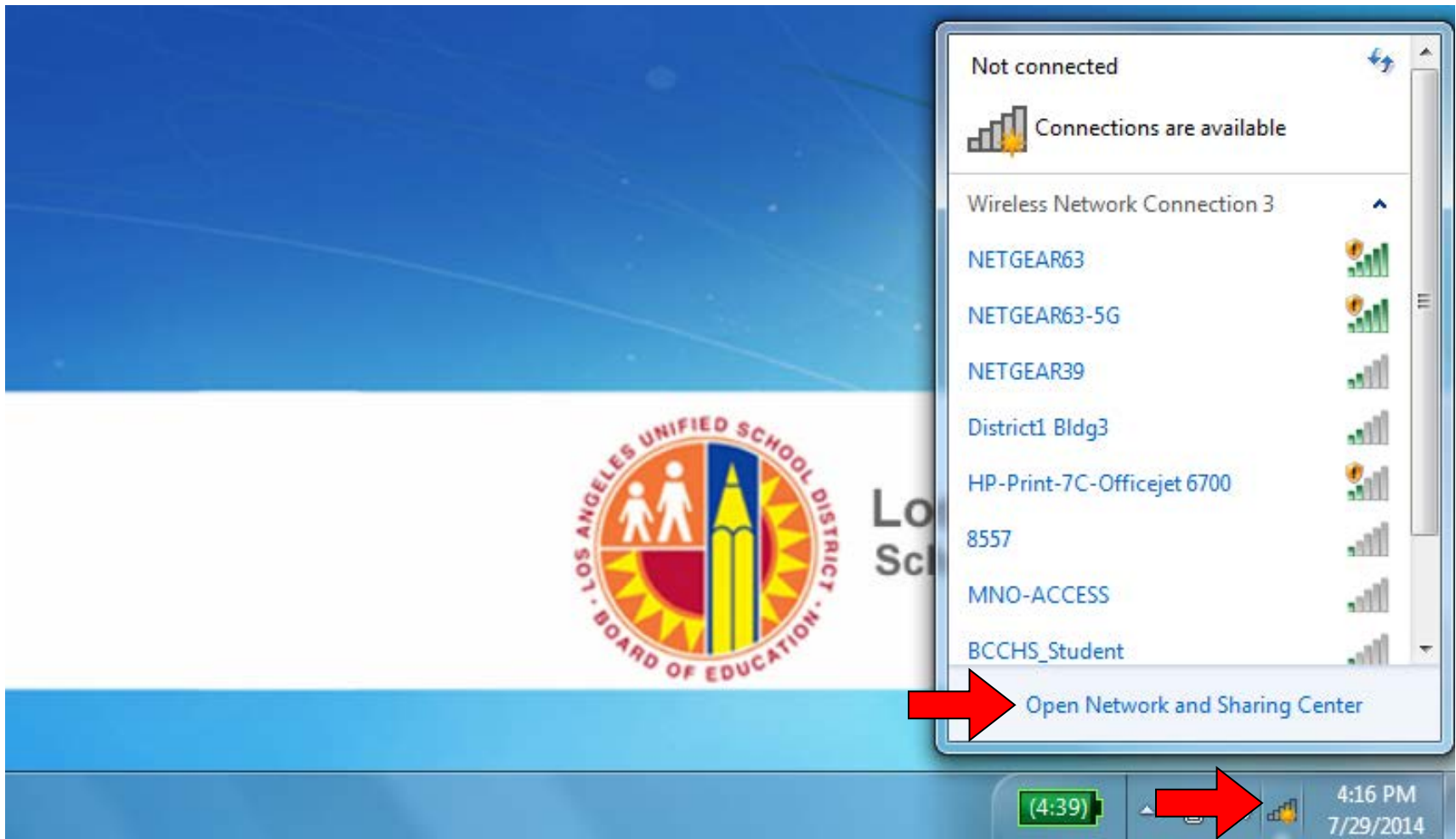


Step 1: Click on wireless icon in System Tray, and “Open Network and Sharing”



Step 2: Click on “Manage Wireless Networks”

The screenshot shows the Windows Control Panel window titled "Control Panel > Network and Internet > Network and Sharing Center". The address bar includes a search box labeled "Search Control Panel".

Left Navigation Pane:

- Control Panel Home
- Manage wireless networks** (indicated by a red arrow)
- Change adapter settings
- Change advanced sharing settings

Main Content Area:

View your basic network information and set up connections [See full map](#)

LAUSDLO-S52NIP6 (This computer) — — Internet

View your active networks [Connect to a network](#)

You are currently not connected to any networks.

Change your networking settings

- [Set up a new connection or network](#)
Set up a wireless, broadband, dial-up, ad hoc, or VPN connection; or set up a router or access point.
- [Connect to a network](#)
Connect or reconnect to a wireless, wired, dial-up, or VPN network connection.
- [Choose homegroup and sharing options](#)
Access files and printers located on other network computers, or change sharing settings.
- [Troubleshoot problems](#)
Diagnose and repair network problems, or get troubleshooting information.

See also

- HomeGroup
- Intel® PROSet/Wireless Tools
- Internet Options
- Windows Firewall

Step 3: Click on “Add”

Control Panel > Network and Internet > Manage Wireless Networks

Search Manage Wireless Networks

Manage wireless networks that use (Wireless Network Connection 3)

Windows tries to connect to these networks in the order listed below.

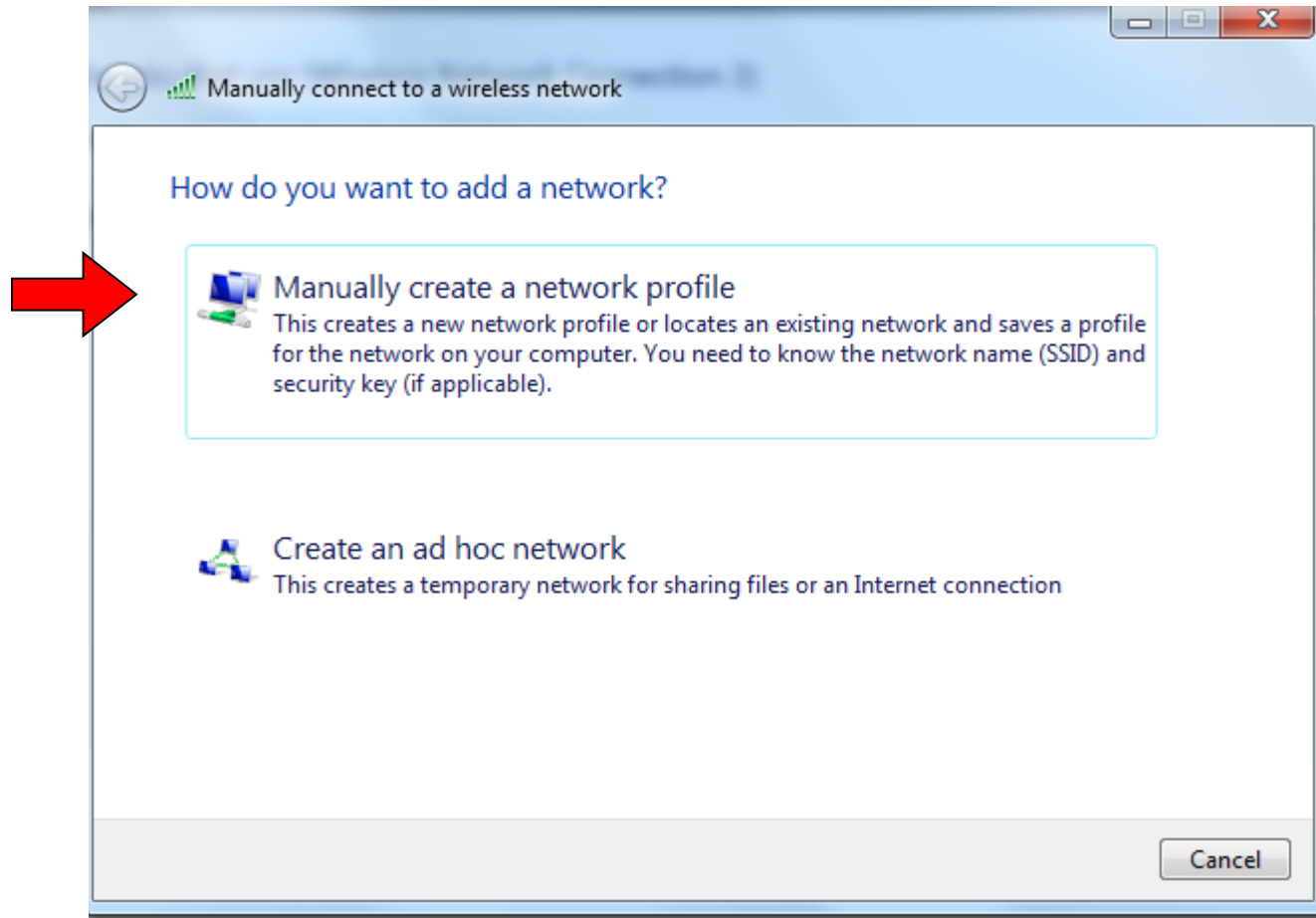
Add Properties Profile types Network and Sharing Center

Networks you can view, modify, and reorder (15)

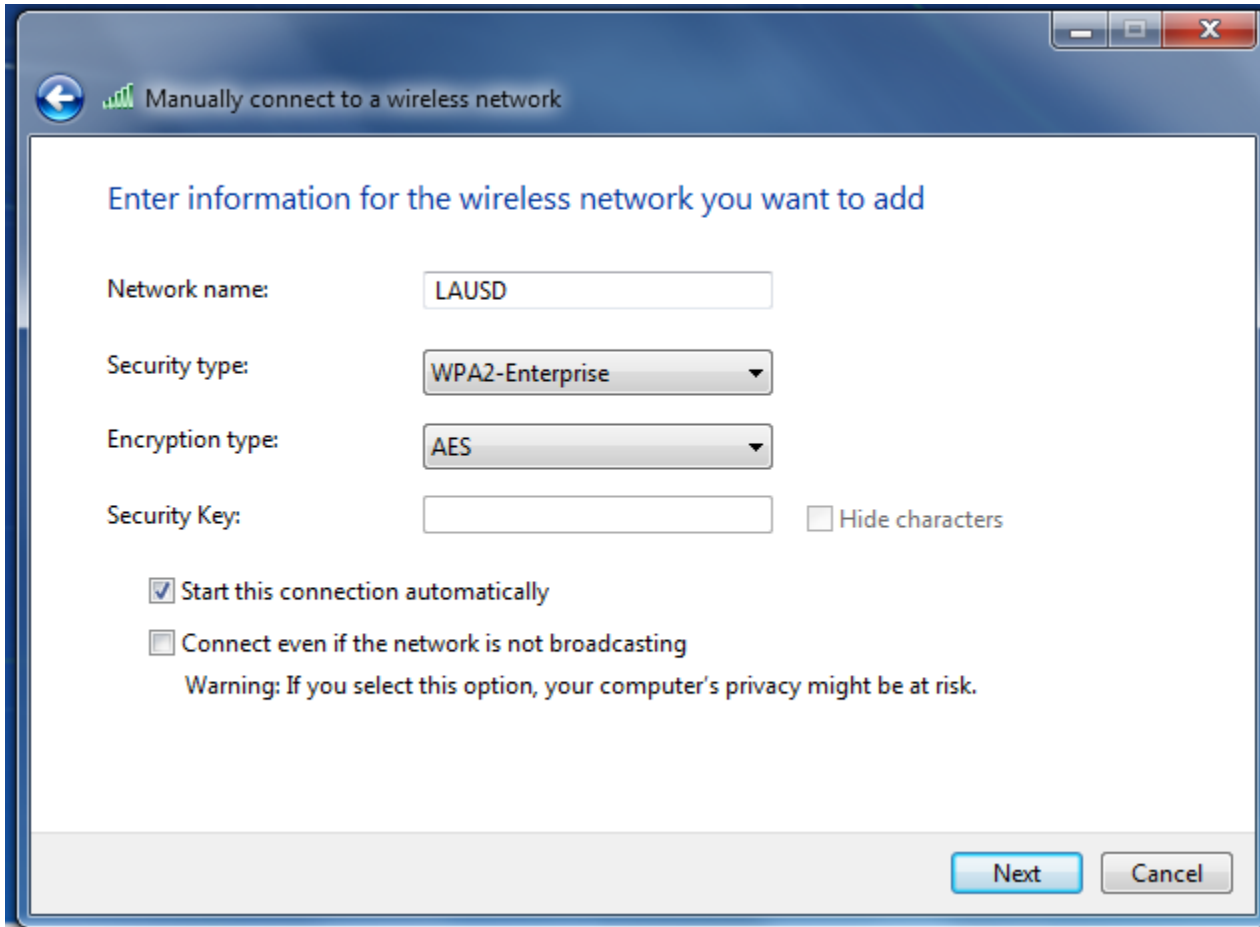
Network Name	Security	Type	Connectivity
NETGEAR71	WPA2-Personal	Any supported	Automatically connect
escn main 1	WPA2-Personal	Any supported	Automatically connect
ATT144	WPA2-Personal	Any supported	Automatically connect
6986	WPA2-Personal	Any supported	Automatically connect
EES	WPA2-Personal	Any supported	Automatically connect
7402	WEP	Any supported	Automatically connect

15 items

Step 4: Click on “Manually create network profile”



Step 5: Type LAUSD, select “WPA2-Enterprise” and click next



Manually connect to a wireless network

Enter information for the wireless network you want to add

Network name:

Security type:

Encryption type:

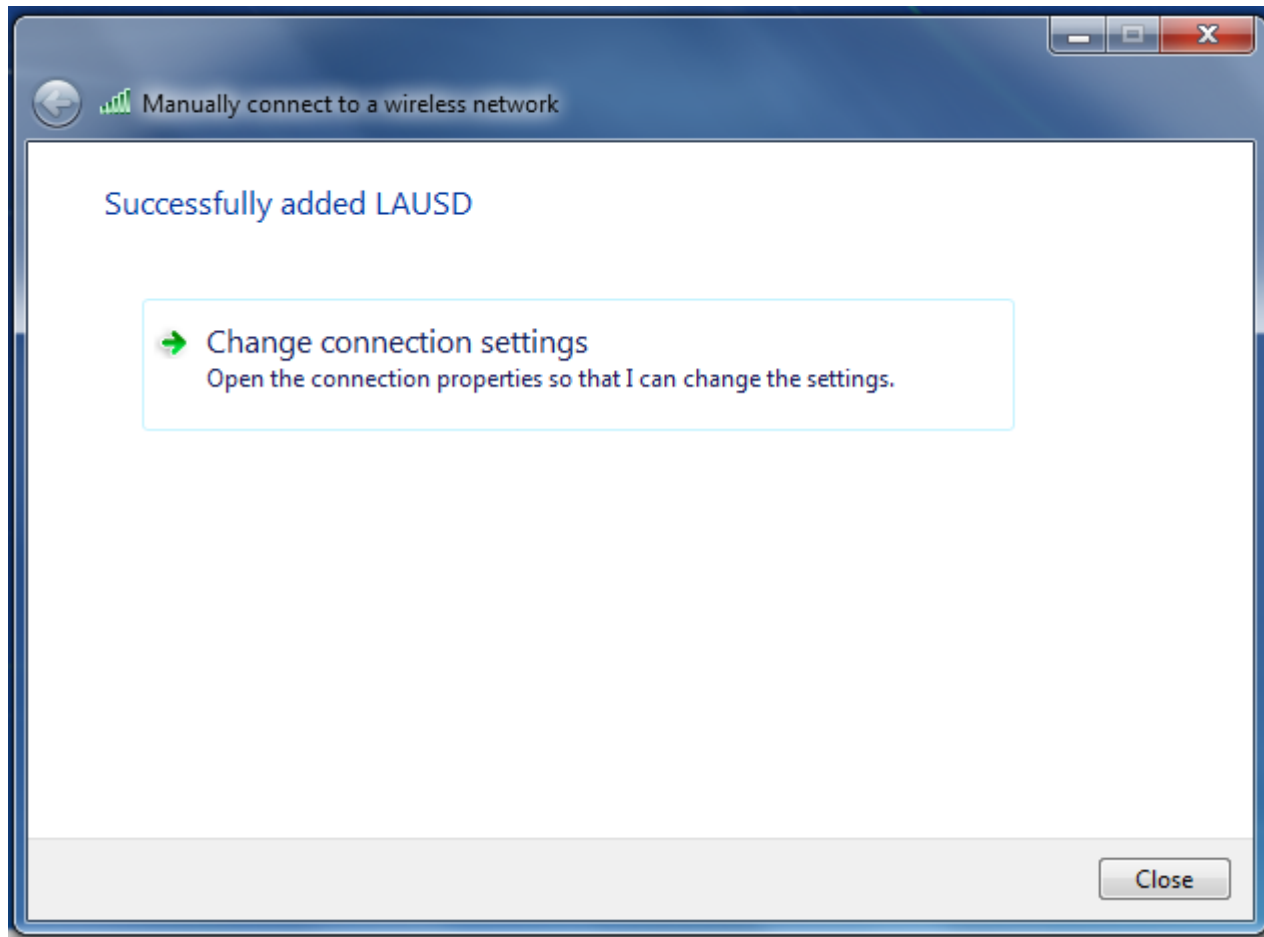
Security Key: Hide characters

Start this connection automatically

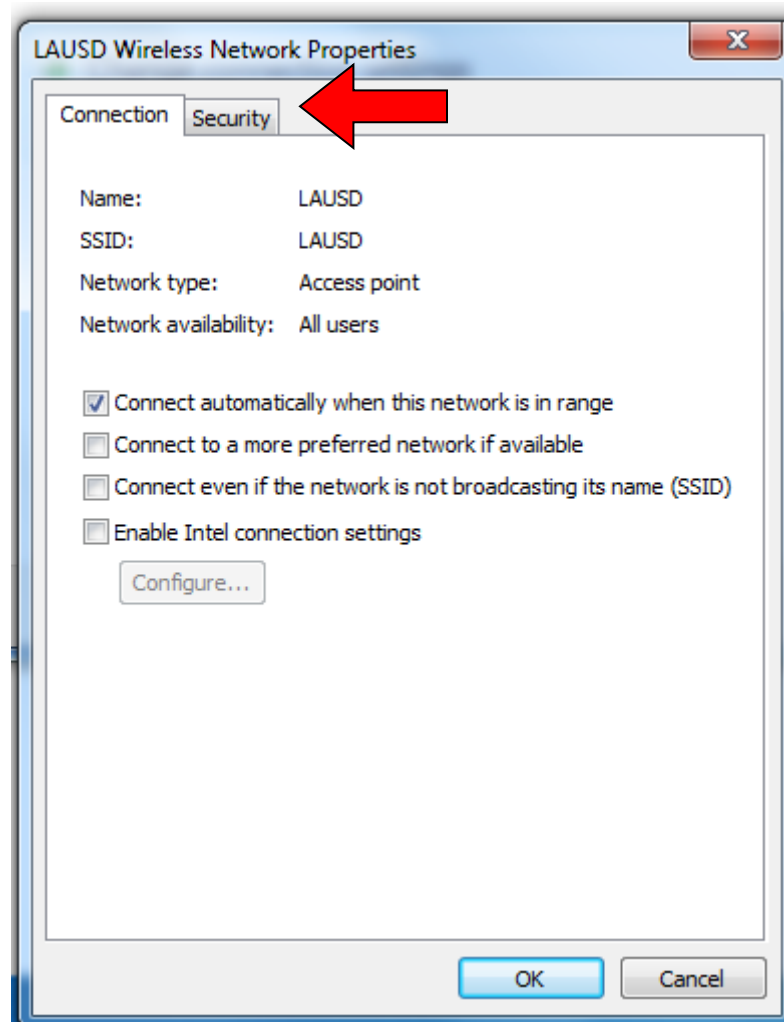
Connect even if the network is not broadcasting

Warning: If you select this option, your computer's privacy might be at risk.

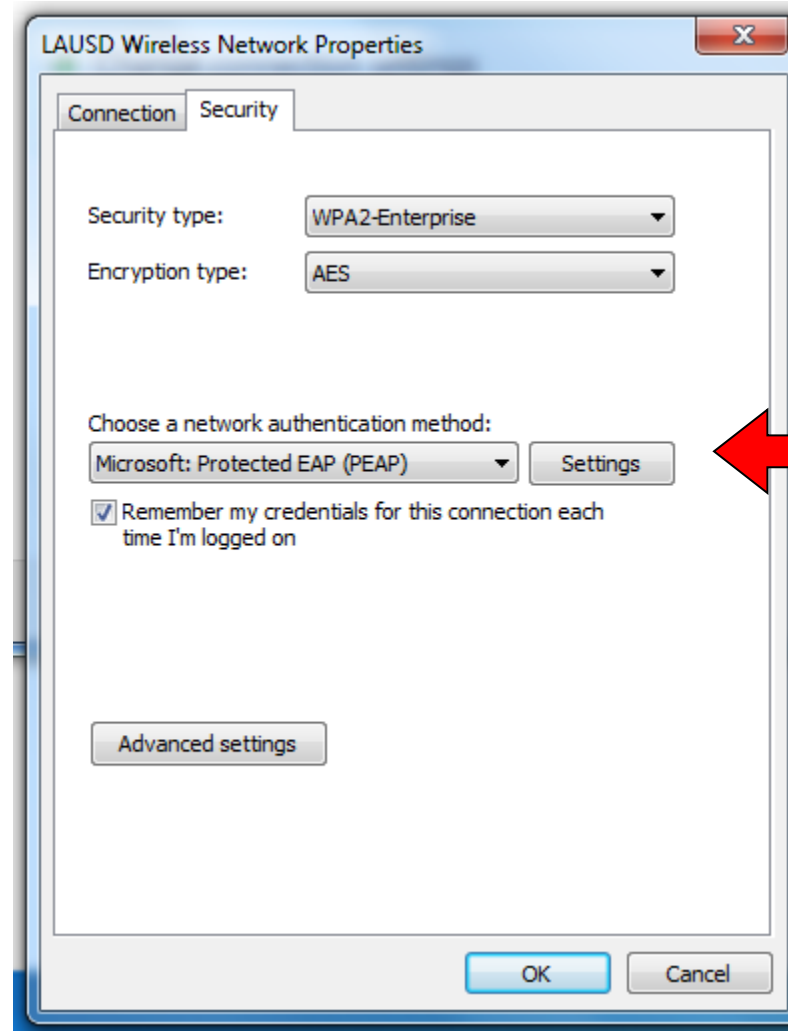
Step 6: Click on Change connection settings



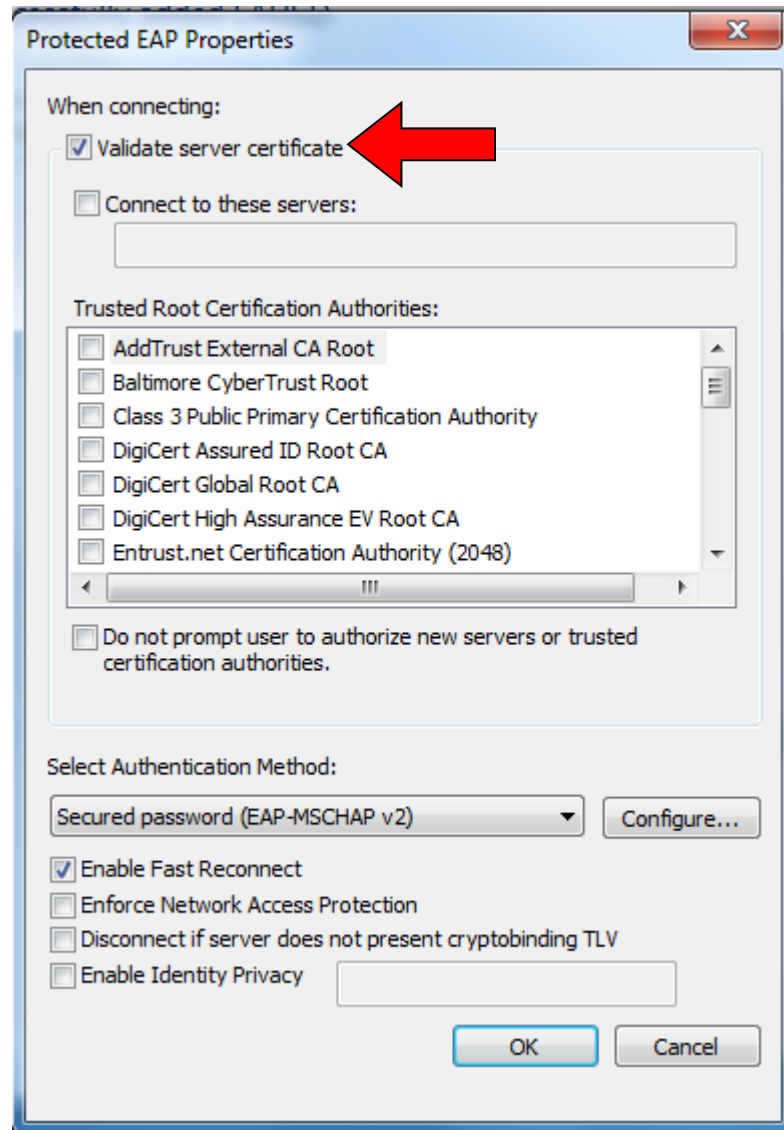
Step 7: Click on Security Tab



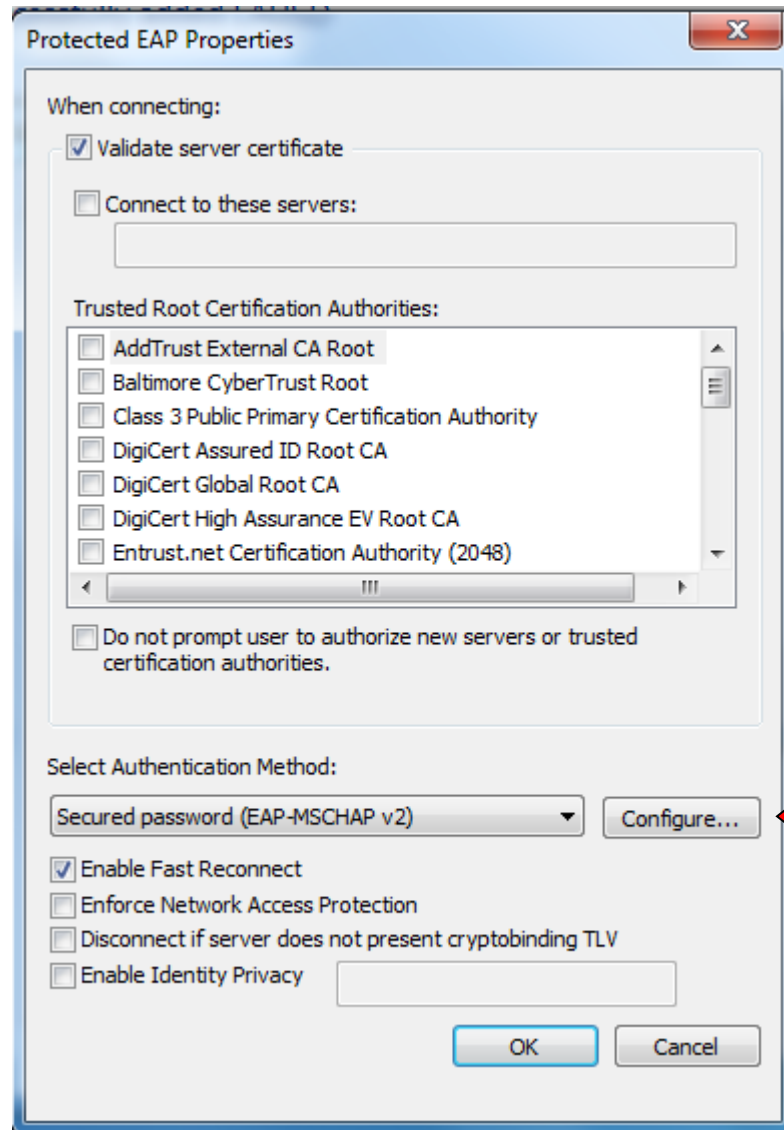
Step 8: Click on Settings under Security Tab



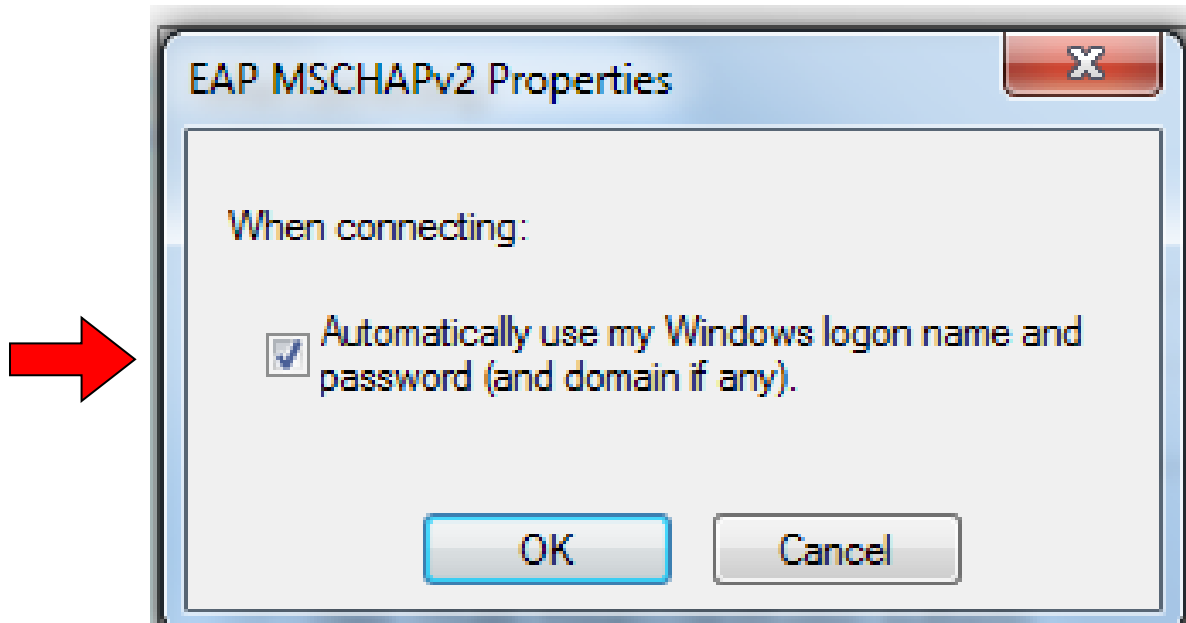
Step 9: Uncheck Valid server certificate



Step 10: Uncheck Valid server certificate



Step 11: Uncheck Automatically use my Windows



Step 12: Check Enable single signon

